








Improving the National Solar Radiation Database (NSRDB) Using a Physics-Based Direct Normal Irradiance (DNI) Model

Yu Xie¹ , Manajit Sengupta¹ , Jaemo Yang¹ , Grant Buster¹ , Brandon Benton¹ ,
Aron Habte¹ , and Yangang Liu² 

¹ Power Systems Engineering Center, National Renewable Energy Laboratory, 15013 Denver West Parkway, Golden, CO 80401, United States.

² Environmental and Climate Sciences Department, Brookhaven National Laboratory, 99 Rochester St., Upton, NY 11973, United States.

*Correspondence: Yu Xie, yu.xie@nrel.gov

Abstract. The National Solar Radiation Database (NSRDB) is a widely used resource providing satellite-derived solar data across the United States and globally. While the NSRDB employs a physical model for computing global horizontal irradiance (GHI), its current method for estimating cloudy-sky direct normal irradiance (DNI) relies on surface observations and empirical models. Recently, a novel physics-based approach, the Fast All-Sky Radiation Model for Solar applications with DNI (FARMS-DNI), was developed to enhance the DNI forecasting. FARMS-DNI incorporates both direct and scattered solar radiation within the circumsolar region, resulting in improved day-ahead DNI predictions when integrated into the Weather Research and Forecasting model with Solar extensions (WRF-Solar). This study integrates FARMS-DNI into the NSRDB algorithm to generate high-resolution DNI data from satellite resources. Our findings reveal that FARMS-DNI effectively mitigates the substantial DNI overestimation present in the conventional NSRDB across surface sites, particularly in conditions categorized as cloudy overcast. Consequently, this innovative model substantially enhances the overall accuracy of the NSRDB.

Keywords: DNI, Solar Radiation, Radiative Transfer

1. Introduction

The National Solar Radiation Database (NSRDB) is a widely used resource for solar energy applications [1-5]. It provides solar radiation data, as well as other meteorological products such as surface temperature and wind speed, which can be downloaded by users through the National Renewable Energy Laboratory's (NREL's) server, an application programming interface (API) service, or the Amazon Web Services (AWS) cloud services. The NSRDB provides information on global horizontal irradiance (GHI), direct normal irradiance (DNI), and diffuse horizontal irradiance (DHI), and it also provides hyperspectral solar data for specific photovoltaic (PV) surfaces with various orientations. The NSRDB uses data from the Geostationary Operational environmental Satellite (GOES), the Modern-Era Retrospective analysis for Research and Applications, Version 2 (MERRA-2), and other ancillary data to assess solar radiation in 30-minute intervals from 1998–2018 with a spatial resolution of 4 km for the continental United States (CONUS) area. Since 2019, the NSRDB data have been available at an improved spatial resolution of 2 km and a higher temporal resolution of 5 minutes.

The current NSRDB algorithm uses the Direct Insolation Simulation Code (DISC) [6] to compute cloudy-sky DNI from the GHI computed using the Fast All-sky Radiation Model for Solar applications (FARMS). However, significant errors exist in the computation of DNI by DISC. For example, DISC is designed to calculate all-sky DNI by relying on empirical correlation derived from surface measurements of GHI and DNI. Consequently, the inherent biases in the empirical relationships and the computation of GHI can accumulate and ultimately result in a more substantial bias when estimating DNI. Further, a single GHI value can correspond to multiple combinations of meteorological conditions, each associated with a different DNI value. The consistent one-to-one mapping between GHI and DNI for a specific atmospheric condition can introduce noticeable errors in the DNI calculations. Numerical weather prediction (NWP) models have relied on the renowned Beer-Bouguer-Lambert law for the calculation of DNI. However, this algorithm neglects the contribution of scattered solar radiation within the circumsolar region. Consequently, when applied in solar forecasting, it frequently results in a substantial underestimation of DNI.

In response to the limitations of the existing DNI models, Xie et al. [7] introduced an innovative physics-based model, known as FARMS-DNI. This model has proven highly effective in the precise estimation of all-sky solar radiation within the circumsolar region. Its integration into the Weather Research and Forecasting model with Solar extensions (WRF-Solar) [8], as demonstrated by Xie et al. [9], has notably reduced forecasting biases in DNI.

2. Methodology

This study aims to improve the accuracy of the NSRDB algorithm by integrating FARMS with DNI (FARMS-DNI) [7] and a new parameterization of cloud transmittance [10]. While clear-sky DNI is computed using REST2 [11], consistent with the conventional NSRDB, a concurrent procedure is employed in cloudy-sky conditions. This procedure uses satellite cloud products to infer cloud transmittance and reflectance for both direct and total downwelling solar radiation, replacing the sequential computation by FARMS and DISC. The cloud transmittance and reflectance data are then incorporated with FARMS, FARMS-DNI, and the clear-sky computation to resolve the cloudy-sky GHI and DNI. Following the previous studies [12], the direct radiation observed by a surface-based pyrheliometer consists of the direct radiation in an infinite-narrow beam, the first order scattered radiation in the circumsolar region, and multiple reflection between the clouds and the land surface that falls into the circumsolar region.

The all-sky DNIs are computed at 19 surface sites within various networks, including the Surface Radiation Budget (SURFRAD), Solar Radiation (SOLRAD), the University of Oregon (UO), the U.S. Department of Energy Atmospheric Radiation Measurement (ARM), and NREL. The computation is performed using input data from the NSRDB for each 5-minute interval spanning the years 2019-2020. The SURFRAD network comprises 7 sites situated in Bondville, Illinois (BON); Desert Rock, Nevada (DRA); Goodwin Creek, Mississippi (GWN); Fort Peck, Montana (FPK); the Pennsylvania State University (PSU); Sioux Falls, South Dakota (SXF); and Table Mountain, Colorado (TBL). The SOLRAD network encompasses sites in Albuquerque, New Mexico (ABQ); Bismarck, North Dakota (BIS); Hanford, California (HNX); Madison, Wisconsin (MSN); Salt Lake City, Utah (SLC); Seattle, Washington (SEA); and Sterling, Virginia (STE). The UO network comprises 3 sites: Ashland, Oregon (ASO); Eugene, Oregon (EUG); and Silver Lake, Oregon (SIO). Additionally, there are ARM and NREL sites located at the Southern Great Plains (SGP) and Solar Radiation Research Laboratory (SRRL), respectively. In accordance with the NSRDB algorithm, the computation of DNI in the western and eastern regions relies on data from GOES-17 and GOES-16, respectively. For comparison with FARMS-DNI, DNI is also calculated using the conventional NSRDB algorithm, wherein DISC is employed to estimate DNI from the GHI simulated by FARMS.

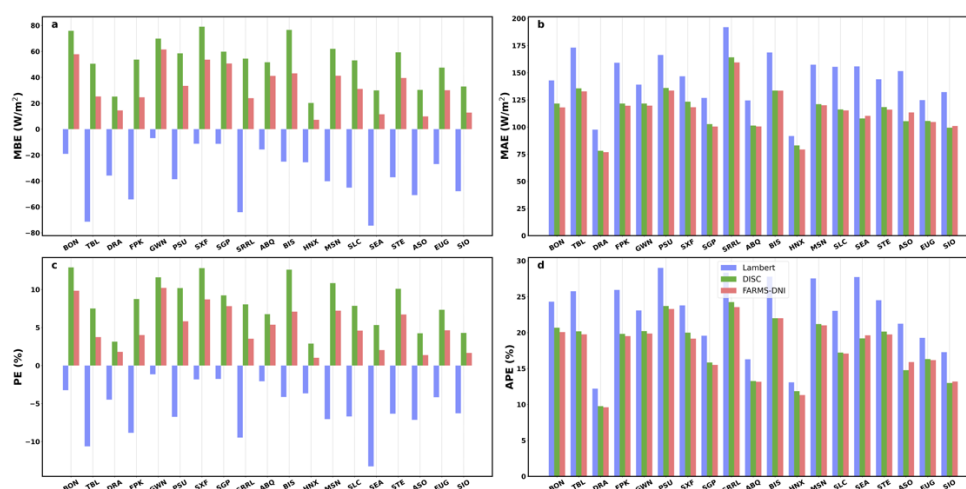


Figure 2. The error metrics of the all-sky DNI computed by the Lambert law, DISC, and FARMS-DNI.

Data availability statement

Data are available on request.

Author contributions

Conceptualization, Y.X., M.S, and Y.L.; Methodology, Y.X., M.S., and Y.L.; Investigation, Y.X., and J.Y.; Writing - original draft, Y.X.; Writing – review & editing, Y.X.; Funding acquisition, M.S; Resources, G.B.,B.B., and A.H.

Competing interests

The authors declare that they have no competing interests.

Acknowledgement

This work was authored in part by the National Renewable Energy Laboratory, operated by Alliance for Sustainable Energy, LLC, for the U.S. Department of Energy (DOE) under Contract No. DE-AC36-08GO28308. Funding provided by the U.S. Department of Energy Office of Energy Efficiency and Renewable Energy Solar Energy Technologies Office and Office of Science Atmospheric System Research (ASR) program. The Brookhaven National Laboratory is operated by the Brookhaven Science Associates, LLC (BSA), for the U.S. Department of Energy under Contract No. DE-SC0012704.

The views expressed in the article do not necessarily represent the views of the Department of Energy or the U.S. Government. The U.S. Government retains and the publisher, by accepting the article for publication, acknowledges that the U.S. Government retains a nonexclusive, paid-up, irrevocable, worldwide license to publish or reproduce the published form of this work, or allow others to do so, for U.S. Government purposes.

This research was performed using computational resources sponsored by the Department of Energy's Office of Energy Efficiency and Renewable Energy and located at the National Renewable Energy Laboratory.

References

1. M. Sengupta, Y. Xie, A. Lopez, A. Habte, G. Maclaurin, and J. Shelby, "The National Solar Radiation Data Base (NSRDB)," *Renew. Sustain. Energy Rev.*, vol. 89, pp. 51-60, 2018.
2. Y. Xie, M. Sengupta, and J. Dudhia, "A Fast All-sky Radiation Model for Solar applications (FARMS): Algorithm and performance evaluation," *Sol. Energy*, vol. 135, pp. 435-445, 2016.
3. Y. Xie, M. Sengupta, and M. Dooraghi, "Assessment of uncertainty in the numerical simulation of solar irradiance over inclined PV panels: New algorithms using measurements and modeling tools," *Sol. Energy*, vol. 165, pp. 55-64, 2018.
4. Y. Xie and M. Sengupta, "A Fast All-sky Radiation Model for Solar applications with Narrowband Irradiances on Tilted surfaces (FARMS-NIT): Part I. The clear-sky model," *Sol. Energy*, vol. 174, pp. 691-702, 2018.
5. Y. Xie, M. Sengupta, and C. Wang, "A Fast All-sky Radiation Model for Solar applications with Narrowband Irradiances on Tilted surfaces (FARMS-NIT): Part II. The cloudy-sky model," *Sol. Energy*, vol. 188, pp. 799-812, 2019.
6. E. Maxwell, "A quasi-physical model for converting hourly global horizontal to direct normal insolation," presented at the Solar Energy Research Inst., Golden, CO, 1987.
7. Y. Xie et al., "A physics-based DNI model assessing all-sky circumsolar radiation," *iScience*, vol. 22, p. doi.org/10.1016/j.isci.2020.100893, 2020.
8. P. Jimenez et al., "WRF-Solar: Description and clear-sky assessment of an augmented NWP model for solar power prediction," *Bull. Amer. Meteor. Soc.*, vol. 97, pp. 1249-1264, 2016.
9. Y. Xie, J. Yang, M. Sengupta, Y. Liu, and X. Zhou, "Improving the prediction of DNI with physics-based representation of all-sky circumsolar radiation," *Sol. Energy*, vol. 231, pp. 758-766, 2022.
10. J. Yang, Y. Xie, M. Sengupta, Y. Liu, and H. Long, "Parameterization of cloud transmittance for expeditious assessment and forecasting of all-sky DNI.," *J. Renewable Sustainable Energy*, vol. 14, p. 063703, 2022.
11. C. Gueymard, "REST2: High-performance solar radiation model for cloudless-sky irradiance, illuminance, and photosynthetically active radiation - Validation with a benchmark dataset," (in English), *Sol. Energy*, vol. 82, no. 3, pp. 272-285, 2008.
12. P. Blanc et al., "Direct normal irradiance related definitions and applications: The circumsolar issue," *Sol. Energy*, vol. 110, pp. 561-577, 2014.